



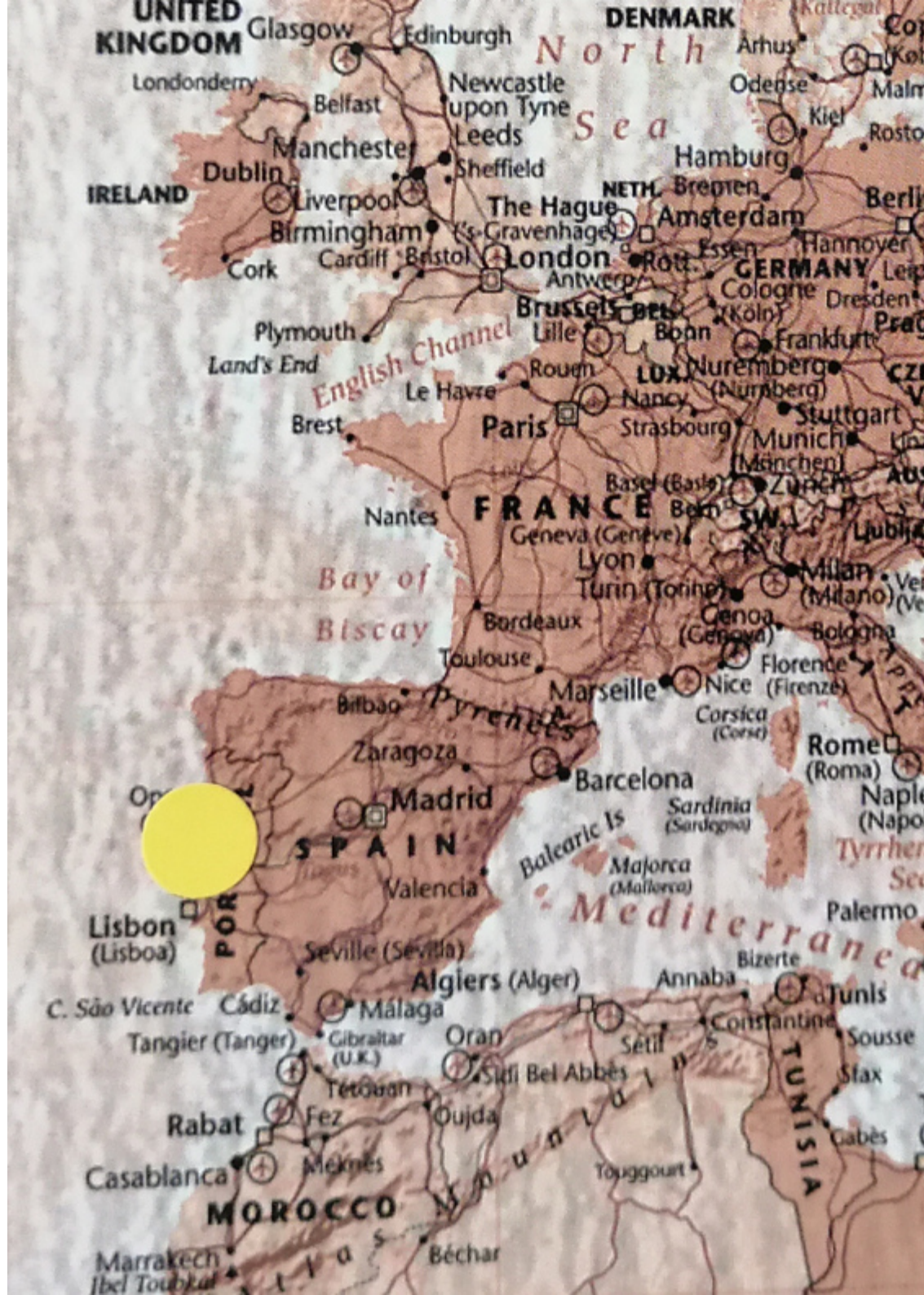
31.01.2021
>
31.03.2021
| EXPOSIÇÃO

"MAILART.PT" #000

Fórum de Arte e Cultura de Espinho, Portugal

exposição coletiva internacional de arte_correio e derivações

https://instagram.com/explore/tags/yzonk_mailart/
www.mailart.pt



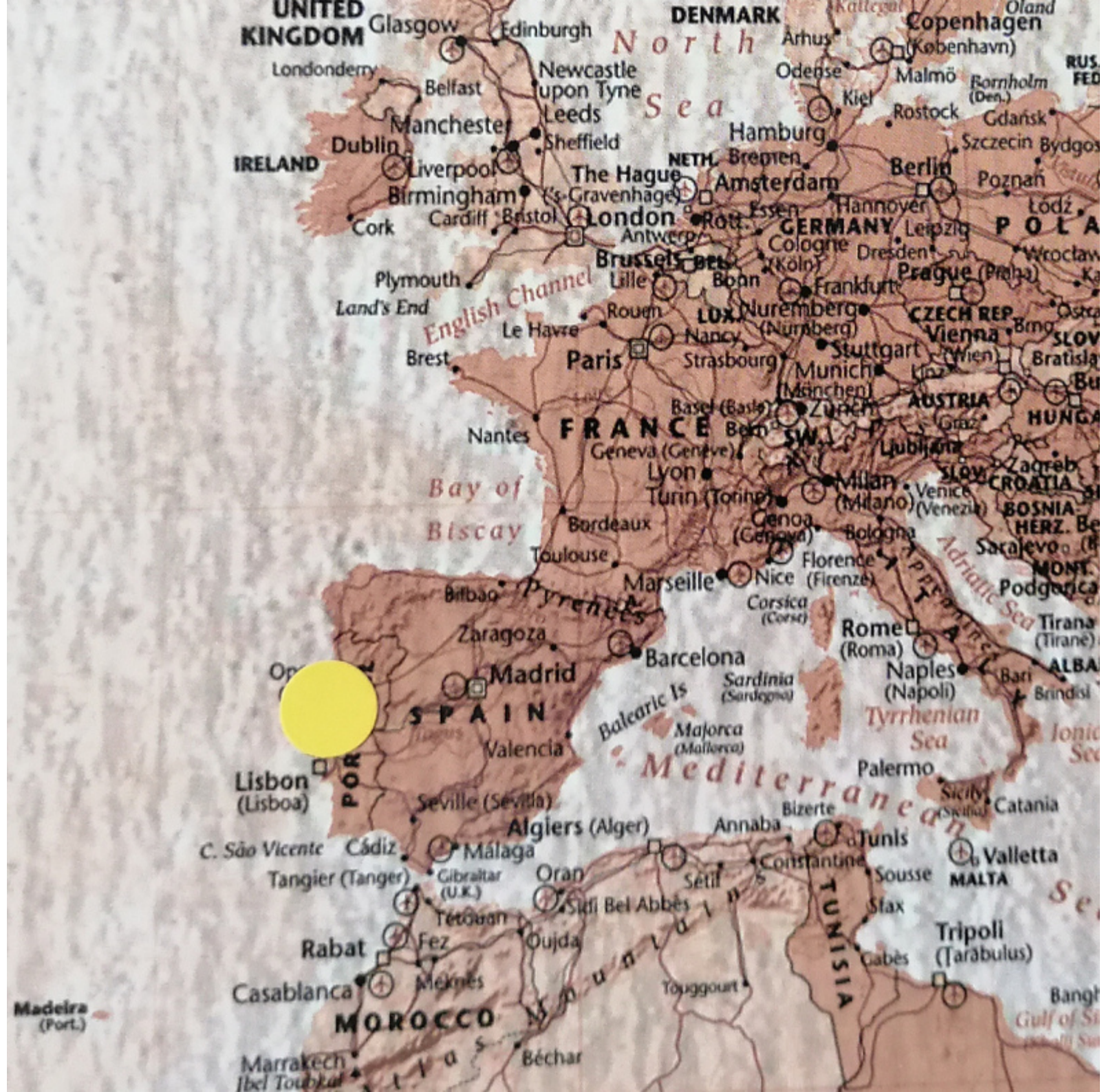
SOBRE

"MAILART.PT" é uma plataforma online para promoção e arquivo internacional de arte_correio [mail_art] & arte_por_correio [art_by_mail].

Partilhando o mesmo nome, "MAILART.PT" é também uma mostra internacional rotativa de arte_correio, e suas derivações, curada pelo artista Monsenhor enVide neFelibata da companhia Teatro e Marionetas de Mandrágora. Esta Mostra é renovada ao dia 31 de cada mês e apresenta uma selecção das obras mais representativas do seu género e de afamados artistas.

O objetivo deste projeto é promover e elucidar o público sobre esta forma de arte através de uma forte vertente pedagógica.

A rotatividade das obras permite a revisitação e à criação de renovadas coleções confrontando artistas e épocas. Este acervo é também mantido atualizado em formato digital na plataforma www.mailart.pt e pretende vir a ser um objeto de estudo da evolução de novas linguagens plásticas destes autores e das suas carreiras artísticas, dentro do género que é a arte_correio.







MAILART
PT
2015



EXPO ARTE CORREIO

CURADORIA
ENVIDE MATELIARTE

MINISTÉRIO DE CULTURA

MAILART.PT #000 SELECTED ART.

exposição temporária internacional de arte_correio e derivações



FACE . ESPINHO
31 JAN '21 > 31 MAR '21

www.0000.com
www.0000.pt
www.0000.org



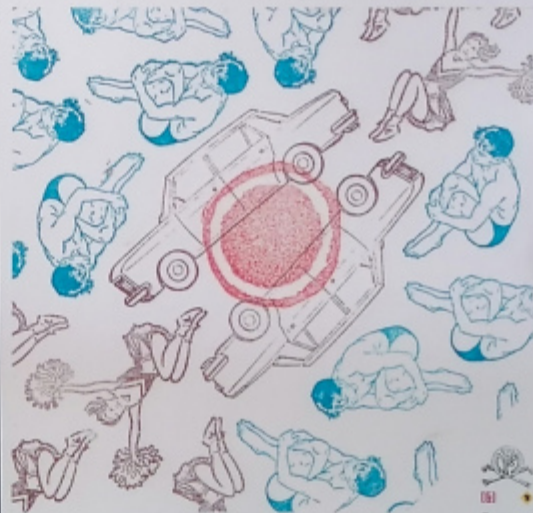
EXPO ARTE CORREIO

CURADORIA
ENVIDE MATELIARTE

MINISTÉRIO DE CULTURA

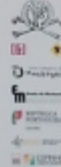
COPY / PASTE

exposição internacional de técnicas de impressão e reprodução na arte_correio



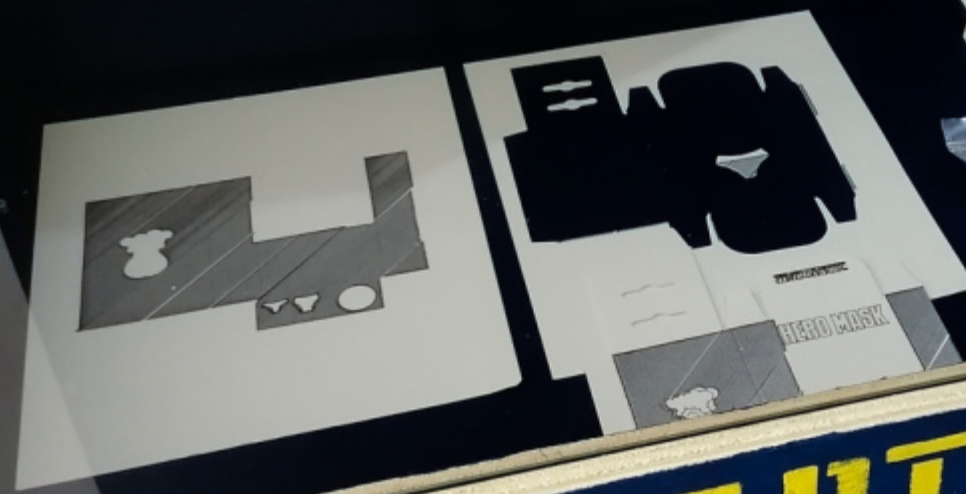
FACE . ESPINHO
18 ABR '21 > 05 JUN '21

www.0000.com
www.0000.pt
www.0000.org





MAILART.PT







MILART.PT



MAILART.PT

MAILART.PT

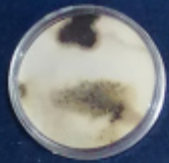
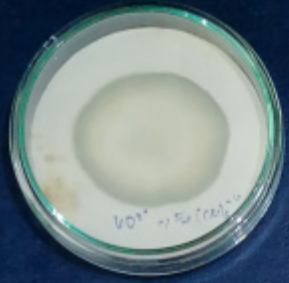




Disposable de-worming kit
The spirit is said to be evil if it:
- The crucifix was stapled, holy water, the name of Jesus and so on.
- About the Catholic Faith.
- Incentives are proud, proud, desperate and so on.
- Refused to discuss the ownership with the priest.
- Appearance of nausea or depression, or leaving, leaving stench, noise, terror or injury.
- The method was small, but later left a sad, desolate, spiritual spirits and cloud of interference.

1. Litany.
2. Psalm 54 ("Save me, O God, borrow your name").
3. Pleading with God to pray for the exorcism of the evil dragon, and the warning of the spirit of holding. "Tell me your name, one day, and when they go out with some sign."
4. The Gospel (John 1; and / or Mark xvi; Luke x; Luke xi)
5. Prepare for prayer.







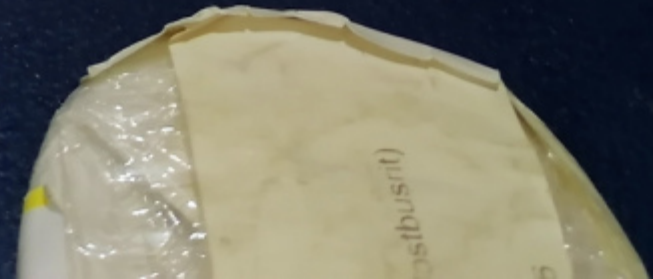


HAIR GLASS

being an and project
 dangerous harmful and
 extremely hazardous materials that are
 potentially
 hazard to your health.

- Avoid leaving the lid unattended
 reach of children and out of the
 animal foodstuffs.
- Do not empty into drains, dispose
 at hazardous or special waste
 collection point.

Testament
 by declare this to be



**IN CASE OF DESPAIR
BREAK GLASS**

500 mg / 2 ml



HOW TO TAKE
Take 1 tablet 3 times a day with food and water. If you are taking more than 1 tablet at a time, swallow them all together. Do not crush or chew the tablets. Do not take more than the recommended dose. Do not take if you are allergic to any of the ingredients. Do not take if you are pregnant or breastfeeding. Do not take if you have a history of seizures. Do not take if you have a history of liver or kidney disease. Do not take if you are taking other medications that may interact with this medication. Do not take if you are taking alcohol. Do not take if you are taking grapefruit juice. Do not take if you are taking other medications that may interact with this medication. Do not take if you are taking alcohol. Do not take if you are taking grapefruit juice.

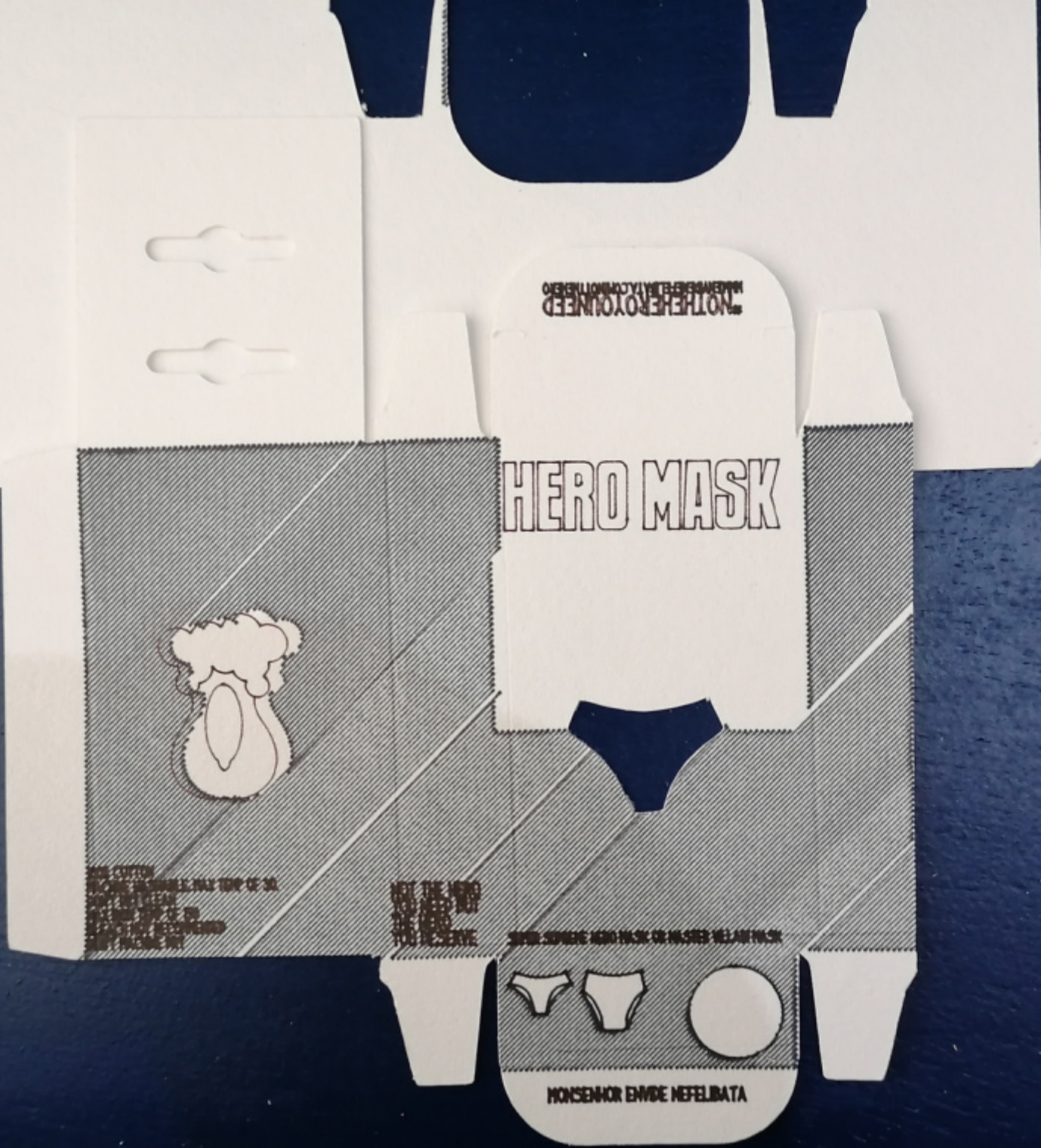
WARNING
This medication may cause drowsiness, dizziness, and blurred vision. Do not drive or operate machinery until you know how this medication affects you. Do not drink alcohol while taking this medication. Do not take if you are pregnant or breastfeeding. Do not take if you have a history of seizures. Do not take if you have a history of liver or kidney disease. Do not take if you are taking other medications that may interact with this medication. Do not take if you are taking alcohol. Do not take if you are taking grapefruit juice.

ADVERSE REACTIONS
Common side effects include drowsiness, dizziness, and blurred vision. Other side effects include nausea, vomiting, and constipation. If you experience any of these side effects, contact your healthcare provider. Do not take if you are pregnant or breastfeeding. Do not take if you have a history of seizures. Do not take if you have a history of liver or kidney disease. Do not take if you are taking other medications that may interact with this medication. Do not take if you are taking alcohol. Do not take if you are taking grapefruit juice.

Last Will & Testament
Bequeathed to my family by my dear friend

**IN CASE OF DESPAIR
BREAK GLASS**
Do not take if you are pregnant or breastfeeding. Do not take if you have a history of seizures. Do not take if you have a history of liver or kidney disease. Do not take if you are taking other medications that may interact with this medication. Do not take if you are taking alcohol. Do not take if you are taking grapefruit juice.





NOT THE HERO YOU NEED

HERO MASK



100% COTTON
MACHINE WASHABLE. MAX
DONT DRY CLEAN
MAX IRON TEMP OF 150
BLEACH NOT RECOMMEND
DONT MACHINE DRY

NOT THE HERO
YOU NEED BUT
THE HERO
YOU DESERVE

SUPER SUPREME HERO MASK OR WASHED VELL AIR MASK



MONSEHOR ENVIDE NEFELIBATA

NOT THE HERO
YOU NEED BUT
THE HERO
YOU DESERVE

100% COTTON
MACHINE WASHABLE. MAX
DONT DRY CLEAN
MAX IRON TEMP OF 150
BLEACH NOT RECOMMEND
DONT MACHINE DRY

SUPER SUPREME HERO M





NOT REPRODUCED

HERO MASK



FOR THE MAKEUP ARTIST
TO USE
FOR THE HERO MASK

FOR THE MAKEUP ARTIST
TO USE
FOR THE HERO MASK



FOR THE MAKEUP ARTIST
TO USE
FOR THE HERO MASK

FICHA ARTÍSTICA

DIREÇÃO ARTÍSTICA E CURADORIA Monsenhor enVide neFelibata

ARTISTA DESTACADO Monsenhor enVide neFelibata

CONCEÇÃO DO ESPAÇO EXPOSITIVO Monsenhor enVide neFelibata

CONSTRUÇÃO DO ESPAÇO EXPOSITIVO Hélder Silva, Migvel Tepes, Monsenhor enVide neFelibata

CONSULTADORIA ARTÍSTICA Migvel Tepes

DESIGN E FOTOGRAFIA YZONK.com

PRODUÇÃO YZONK.com & MAILART.pt

CO-PRODUÇÃO Teatro e Marionetas de Mandrágora & Escola da Marioneta

SERVIÇO EDUCATIVO Serviço Educativo do Museu Municipal de Espinho

APOIO À PRODUÇÃO Clara Ribeiro & Filipa Mesquita

APOIO Município de Espinho & Museu Municipal de Espinho

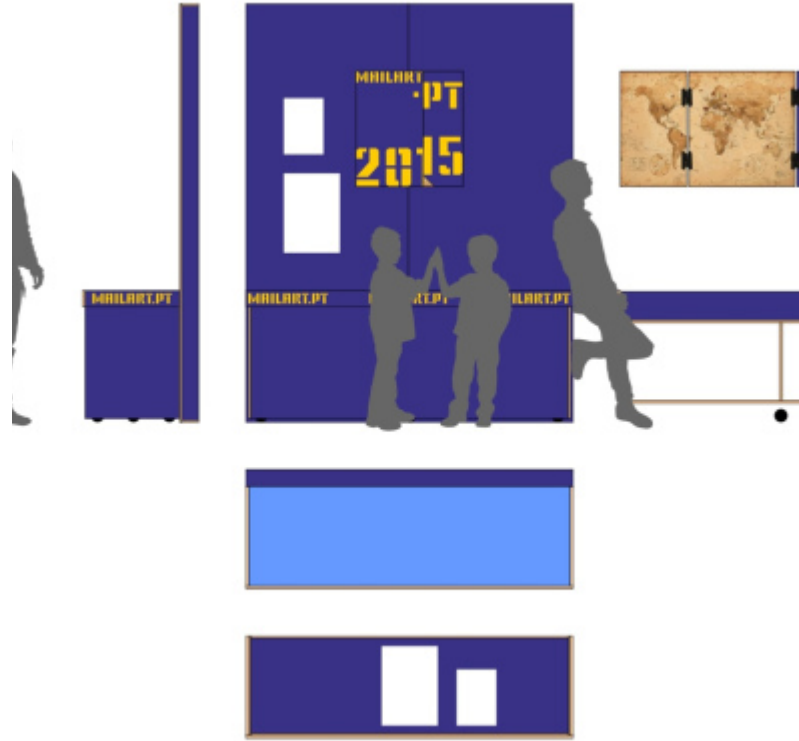
APOIO FINANCEIRO Direção-Geral das Artes & Ministério da Cultura da República Portuguesa

AGRADECIMENTOS Armando Bouçon, Berta Pereira, Rita Betânia

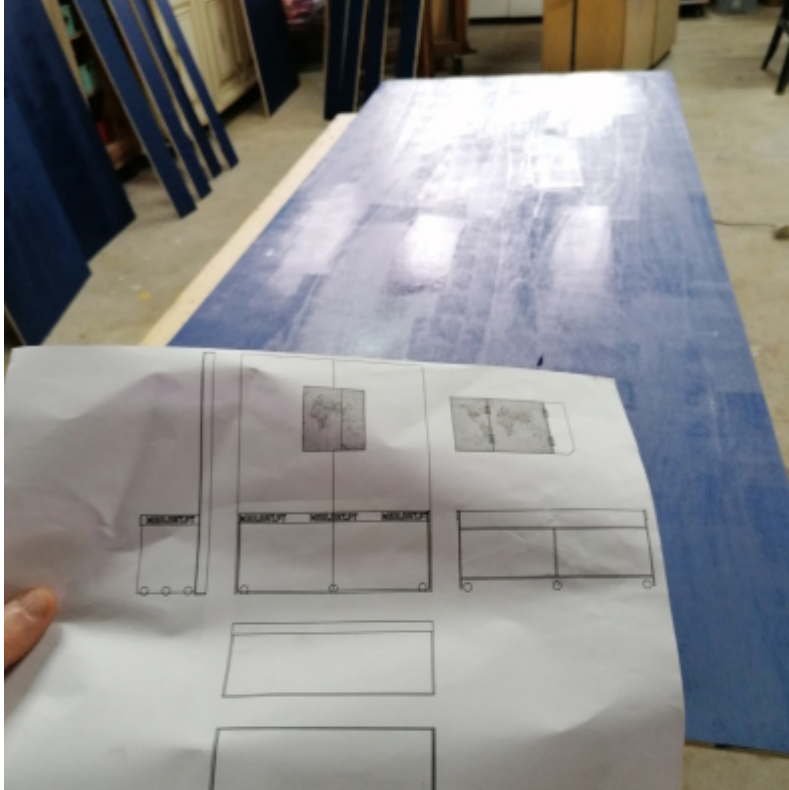
PROMO

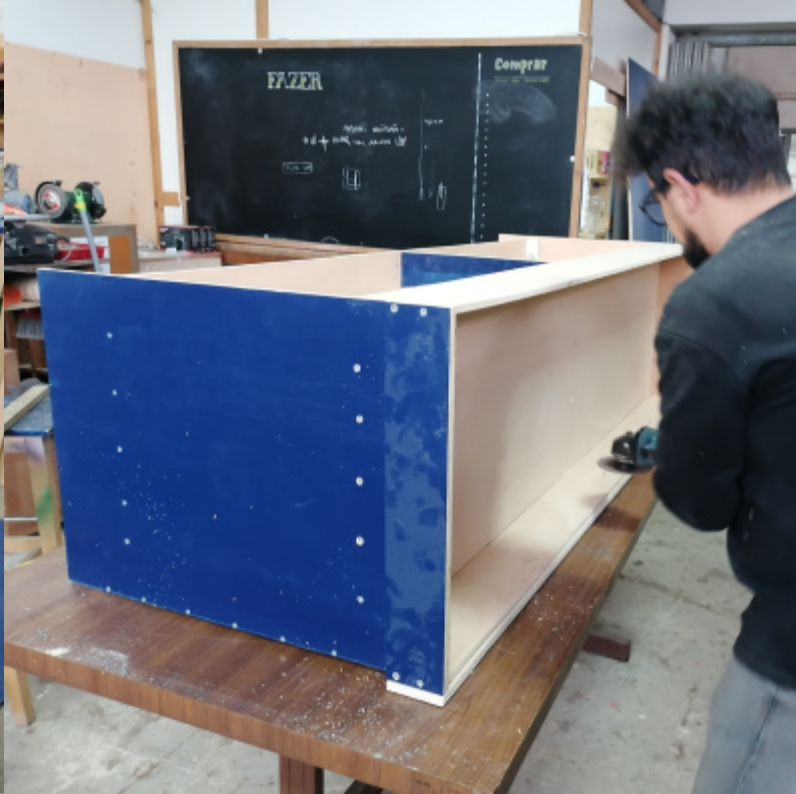


DESENHOS



GALERIA





MONTAGEM





+351 938 940 122

www.MailArt.pt

mailart@mailart.pt

<https://www.instagram.com/mailart.pt/>

<http://youtube.com/@mailart>

<https://paypal.me/YZONK>

<https://yzonk.com/>