

27.04.2019  
. 14.00 >  
17.00 |  
WORKSHOP

"mail\_art & art\_by\_mail"

Biblioteca Municipal José Marmelo Silva, Portugal

free entrance, required subscription

bme@cm-espinho.pt

bibliotecamunicipalespinho.blogspot.pt

M.6 / 3h

*mail\_art and art\_by\_mail workshop for kids and families*



# ABOUT

At this workshop we'll explore materials and techniques commonly used on mail\_art as well as provide information about regulations on postal delivery regarding to mail\_art. We will also have time for a brief debate on some important artists of this area, aided by the viewing and analysis of some of their works as well as a guided tour through the exhibition.

At this workshop, artistic objects will be created with the purpose of being sent to international artists.

Tools and materials will be made available to the trainees, however it is advisable to bring your own material to increase productivity. The tools and materials to be explored in the workshop are:

- . scissors, scalpels and x-acts
- . miscellaneous papers and cartons
- . glues and self-adhesive tapes
- . magazines, newspapers and books to cut from
- . markers, pens and pencils

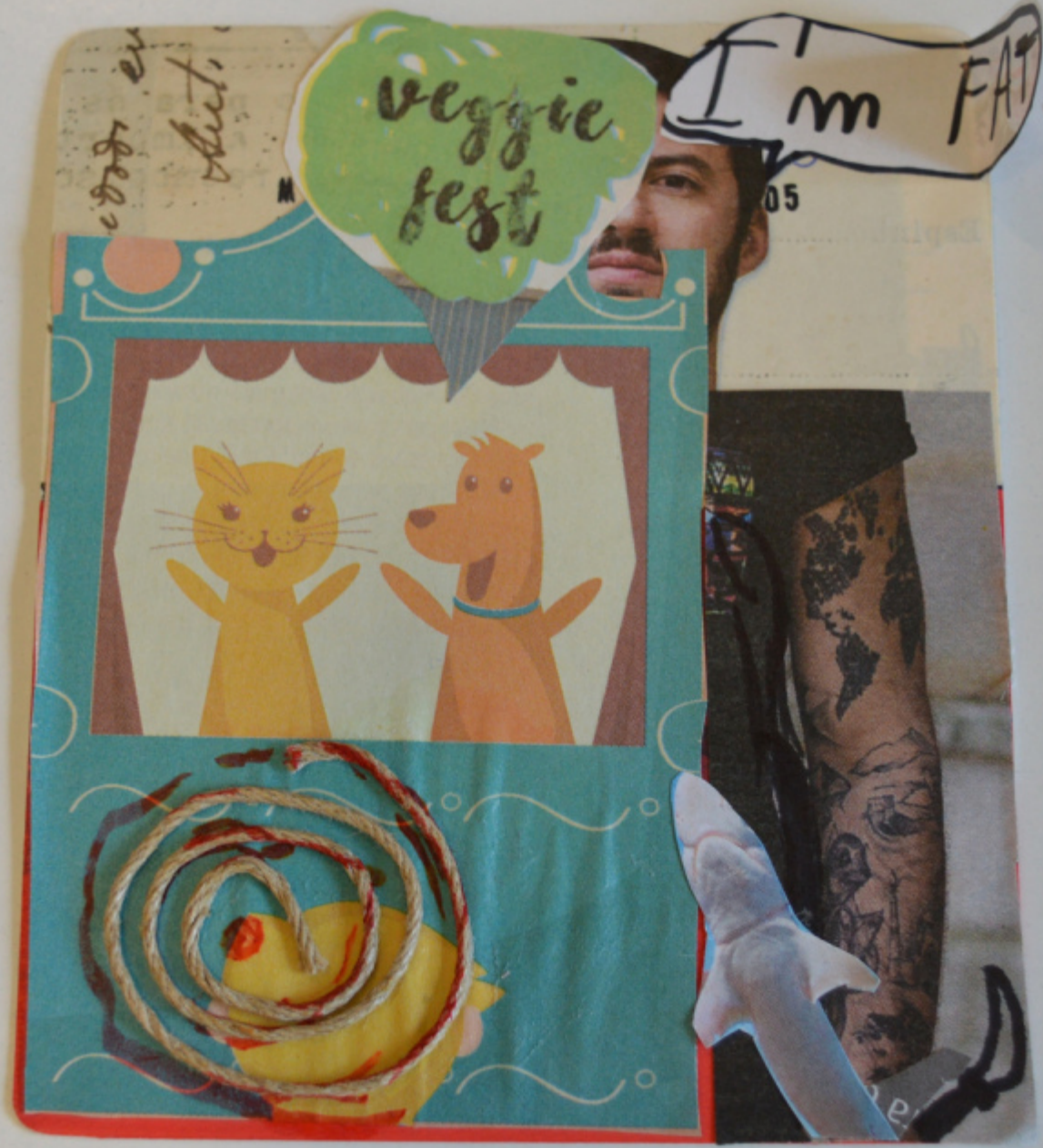


Talvez, devagarinho,

Esse espaço

me desperte







CLASSE DE MADAME  
 GROSSET · ÉCOLE  
 MATERNELLE PASTEUR  
 26 AVENUE PASTEUR  
 59920  
 QUIEVRECHAIN  
 FRANCE



27 APR 2019



INGREDIENTES: Cera,  
 integral (40,2%), amêndoas,  
 integral (5,8%), chocolate  
 (peças de cacau, açúcar, gordura,  
 leite em pó, leite condensado,  
 leite, sal, emulsificante, ácido  
 ascórbico).

Vit. A	159
Vit. B1	1,49
Vit. B2	2,09
Vit. B6	1,19
Vit. C	2,49
Vit. E	7,09
Vit. K	2,40g
Calcio	133 mg
Ferro	137 mg
Fósforo	14,6 mg
Proteína	67 mg
Carboidrato	22 mg
Ácido gorduroso total	55 mg





Avião  
Priority  
210427

1,00  
PORTUGAL  
CORREIOS  
Tigoadas de Abrantes

ROCIM  
17

© Disney



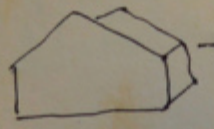
Escola Carvalho  
 Biblioteca municipal José-marinho  
 Silva - Oliveira 24, Parque  
 João de Deus  
 45 00-358 ESPINHO  
 Portugal

Neste aperto, tão pouco espaço

AYLIN  
 classe de madame grossat  
 école Maternelle Pasteur  
 26 Avenue Pasteur  
 59920 Quiévenain  
 France



BOÎTE À CARTES POSTALES



plier et assembler avec de la colle



27 ABR 2019

2019  
Domín de Silves  
Biblioteca Municipal  
José Carmelo Silva  
Avenida 24, Parque  
Local de Deus  
4500 - 358 ESPINHO

E quando possas dá-me outro abraço

PORTUGAL



E me aperte, sem me apertar

E estando longe

É nesse abraço que eu descanso

Yassin  
Classe de madame Grosse  
École Maternelle Pasteur  
26 Avenue Pasteur  
59920 Quièvre Chain  
France

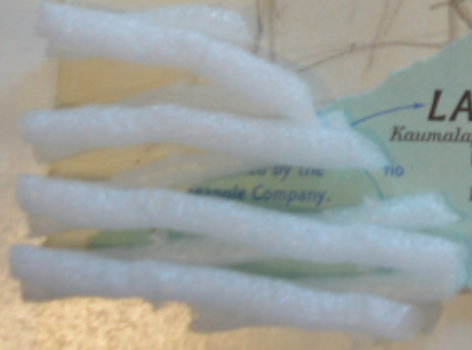


Biblioteca Municipal José  
Marmelo Silva - Avenida 24  
Parque João de Deus 4500-358  
Espinho Portugal

Valentino



domingo  
e







salut

27 ABR 2019



PADE

JÚLIA

Biblioteca Municipal Espinho - Avenida 24, Parque João de Deus

4500-358 Espinho Portugal



Avião  
P

INDUSTRIA  
CONSERVEIRA  
PORTUGUESA

Thaysse  
Classe de Madame Grosset  
ÉCOLE MATEHEILLE PATEU  
26 AVENUE PATEU - 49320  
QUÉBÉCOIS - FOUILLE

tempted  
cigarette there  
the inevitable  
During the night watches, the Lieutenant  
Watch would invariably visit the bridge to  
everyone was alive. One of the Lieutenants  
very unpopular, and to play a joke on his  
signalmen dressed up a "dummy" one dark  
and when the ship was approaching  
a lighted cigarette. Up came  
Lieutenant and a loud sound of  
the signalman and got still more  
impatient at his hundred  
the question continued  
g time his angry  
used the  
We had  
ssed a  
easion I  
one of

PROTECTED  
COMMUNICATIONS





L'INE / CLASSE DE MADAME GROSSET //

ÉCOLE MATERNELLE PASTEUR //

26

AVENUE PASTEUR / 59920

QUIEVRECHAIN /

FRANCE

FROM LUANNA

BIBLIOTECA MUNICIPAL JOSÉ MARMELO SILVA  
AVENIDA 24, PARQUE JOÃO DE DEUS  
4500 - 358 ESPINHO  
PORTUGAL



Calvin ☺

classe de Madame  
Grosset

École Maternelle  
Pasteur

26 Avenue  
Pasteur 59920  
Quiévrain

France



Biblioteca Municipal, José  
 Marmelo Silva  
 Avenida 29, João de Deus  
 4500-358 ESPINHO  
 PORTUGAL

LEONOR



MM  S1330A  
reader  
1021974\_5





Avião  
Priority  
210427



**T I A J**  
BIBLIOTECA MUNICIPAL JOSÉ MARCELINO SILVA  
AVENIDA 24 PARQUE JOÃO DE DEUS  
4500-358 ESPINHO  
PORTUGAL



27 JUN 2019

**MOHAMED**  
Classe de Mmes, GROSSET  
ÉCOLE MATERNELLE PASTEUR  
26, AVENUE PASTEUR  
59920 QUIEVRECHAIN  
FRANCE



PORTO  
**MAMMA**  
CONFETARIA

JADE

CLASSE DE MADAME GROSSET  
ÉCOLE MATERNELLE PASTEUR  
26 AVENUE ~~QUIEURECHAIN~~ PASTEUR  
59920 QUIEURECHAIN  
FRANCE

Avião  
Priority  
20427

1.00  
a  
republic



Avião  
Priority  
210427

Avião  
Priority  
210427

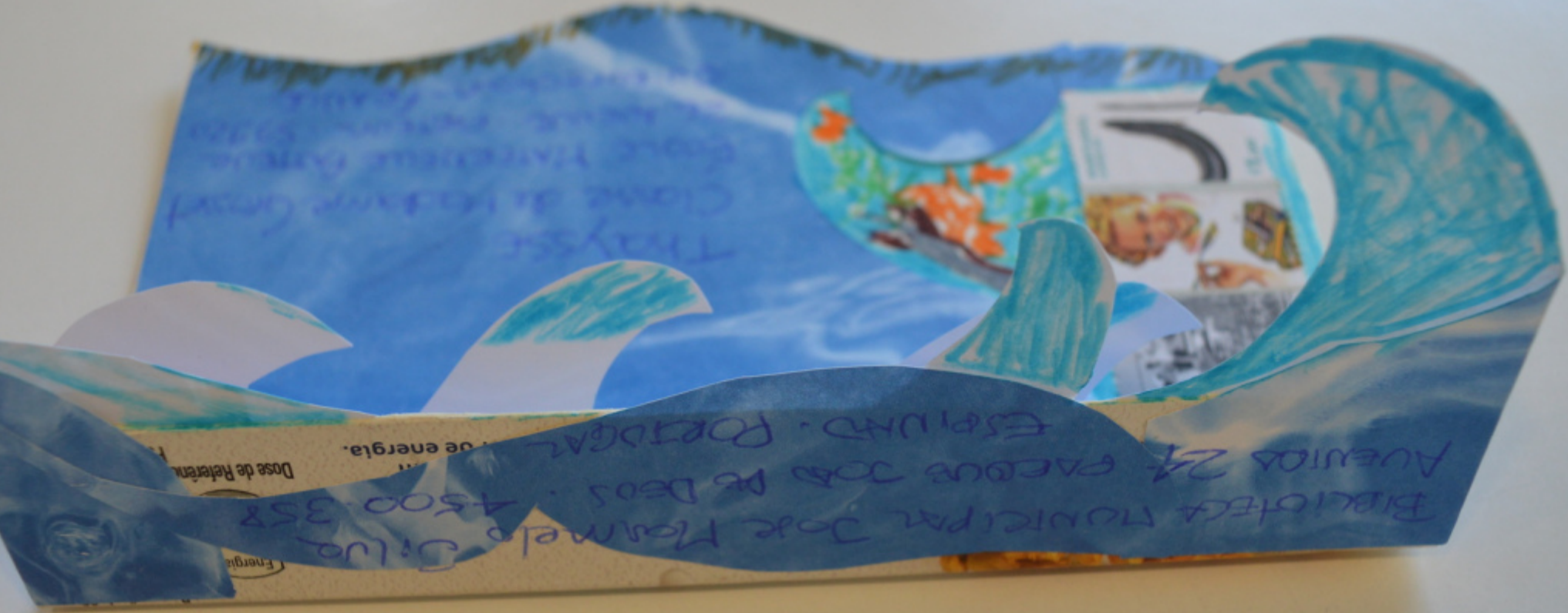
Avião  
Priority  
210427

Avião  
Priority  
210427

Avião  
Priority  
210427

Avião  
Priority  
210427

Avião  
Priority  
210427



LINE / CLASSE DE MADAME GROSSET // ÉCOLE MATERNELLE PASTEUR

27 ABR 2019

// 26 AVENUE PASTEUR / 59920

FROM LVANNA  
BIBLIOTECA MUNICIPAL JOSÉ MARMELO SILVA  
AVENIDA 24, PARQUE JOÃO DE DEUS  
4500 - 358 ESPINHO  
PORTUGAL



QUIEVRECHAIN / FRANCE

P  
1 d  
1 a 7  
e



*Joana Marques  
44/0000  
4500-413 Estarreja  
Lisboa*

*Joana Marques  
Bo. Dr. Manuel Marques Reis, 40  
3860-264 Estarreja  
Portugal*

hate mail? for ya fat f ck

00012



FROM  
 JÚLIA OLIVEIRA  
 RUA 3, 305 APT. AA  
 4500-298  
 ESPINHO  
 PORTUGAL

TO  
 ERIN S. YOUNG

hate mail? for ya fat f ck  
 PO BOX 7146  
 INNISFORD, ONTARIO  
 L951A9  
 CANADA

00003

Avião  
Priority

210427

MIGUEL TERES  
R. VIRIATO BARBOSA, 605  
4490-683 POVOA VARZIM  
PORTUGAL



hatemail? for ya fat f ck  
Sol Boud Scoussarella  
Rua 24, 441 RIC DIREITO  
AVEIRO - PORTUGAL

ESPINHO  
00011

10000

hate mail? for ya fat f ok

FROM

GIL LAGES

RUA 3,306 APTAMENTO 5

4500-298 ESPINHO

PORTUGAL

TO

AARON MORGANDISO

5609 2<sup>ND</sup> AVE NW, APT 6

SEATTLE WA 98107

USA



Avião  
Priority

210427



FROM  
LUIANA LAGES  
RUA 3, 306 APARTAMENTOS  
4500 - 298  
ESPINHO  
PORTUGAL

TO  
DIANA HALE  
PO BOX 232  
CROZET, VA 22932  
USA



SIMON WARREN  
60A AKE MAN STREET  
TRING - HP23 6AN  
UK

27 ABR 2019



hate mail for yafat €1,00

VACENTINO BARD SCARISANELLA  
RUA 24, 441 RIC DIRETO - ESPINHO - AV  
PORTUGAL - 4500 201

000007

# ART

DIRECTOR Monsenhor enVide neFelibata

TEACHER Serviço Educativo da Divisão de Cultura e Museologia da CME (Rita Betânia)

# GALLERY









































+351 938 940 122

[www.MailArt.pt](http://www.MailArt.pt)

[mailart@mailart.pt](mailto:mailart@mailart.pt)

<https://www.instagram.com/mailart.pt/>

<http://youtube.com/@mailart>

<https://paypal.me/YZONK>

<https://yzonk.com/>